

PART OF THE W.1/2, OF SECTION 14, T.6N., R.1E., S.L.B. & M.
FERGUSON LEGACY SUBDIVISION

178

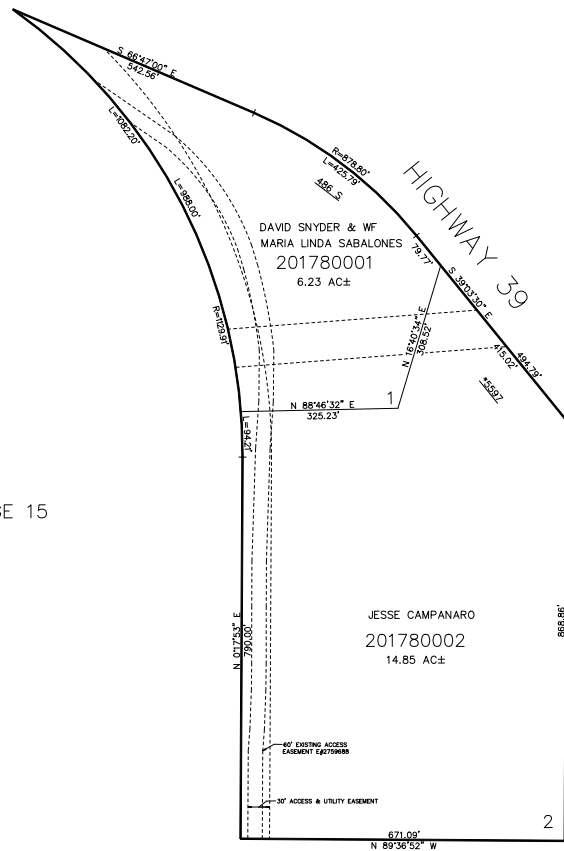
TAXING UNIT: 520

IN WEBER COUNTY
 SCALE 1" = 200'

SEE PAGE 15

SEE PAGE 15

SEE PAGE 15



*ADDRESS AFFIDAVIT E#3259539

10' UTILITY & DRAINAGE EASEMENTS EACH
 SIDE OF PROPERTY LINES AS INDICATED
 BY DASHED LINES EXCEPT AS OTHERWISE
 SHOWN.

SEE PAGE 15

FOR COMPLETE ENG DATA SEE
 ORIGINAL DEDICATION PLAT IN
 BOOK 88, PAGE 51 OF RECORDS.